

State of Wyoming Corner Record

(In compliance with the CORNER PERPETUATION AND FILING ACT, Wyoming Statutes, 1997 Section 33-29-140 et. seq., and the Rules and Regulations of the Board of Professional Engineers and Professional Land Surveyors)

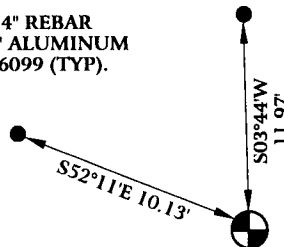
Reverse side of this form may be used if more space is needed.

Record of original survey and citation of source of historical information (if corner is lost or obliterated). Description of corner monumentation evidence found and/or monument and accessories established to perpetuate the location of this corner. Sketch of relative location of monument, accessories, and reference points with course and distance to adjacent corner(s) (if determined in this survey). Method and rationale for reestablishment of lost or obliterated corner.

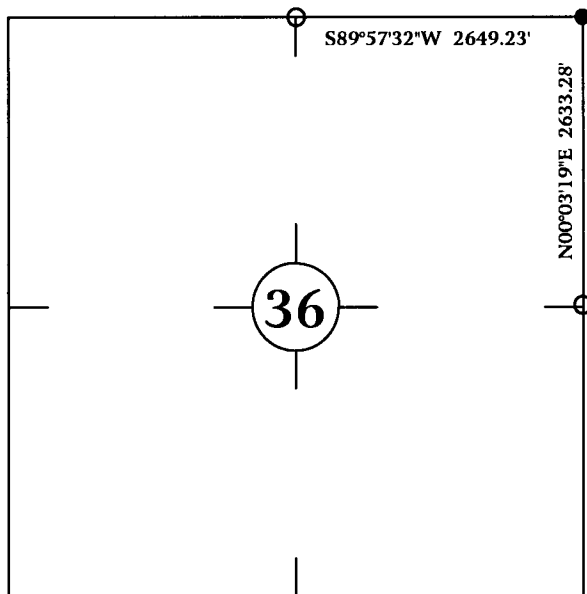
ORIGINAL CALL FOR 20" X 12" X 8" BOULDER.

FOUND MOUND OF STONES. SET 3/4" X 30" REBAR WITH 3 1/4" ALUMINUM CAP. P.L.S. 6099, AND SET TIES AS SHOWN BELOW.

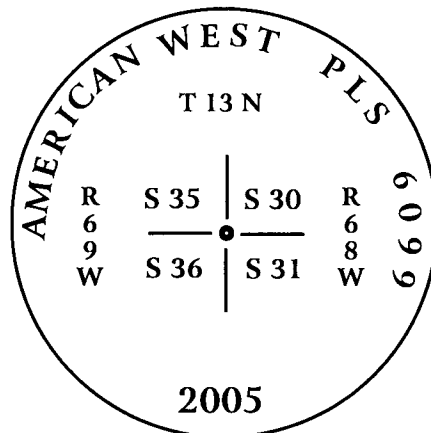
SET 5/8" X 24" REBAR WITH 1 1/2" ALUMINUM CAP. P.L.S. 6099 (TYP).



Monument location



Monument Inscription



3 1/4" ALUMINUM CAP
ON 3/4" X 30" REBAR.

Date of Field Work: May 5, 2005

Office Reference: GALLEGOS05.pro

Cross Index Plat

1	2	3	4	5	6	7	8	9	10	11	12	13	14	15	16	17	18	19	20	21	22	23	24	25		
A																									A	
B																									B	
C	6	5	4	3	2	1																			C	
D																										D
E																										E
F																										F
G	7	8	9	10	11	12																				G
H																										H
J																										J
K	18	17	16	15	14	13																				K
L																										L
M																										M
N																										N
O																										O
P	19	20	21	22	23	24																				P
Q																										Q
R																										R
S																										S
T	30	29	28	27	26	25																				T
U																										U
V																										V
W																										W
X	31	32	33	34	35	36																				X
Y																										Y
Z																										Z
1	2	3	4	5	6	7	8	9	10	11	12	13	14	15	16	17	18	19	20	21	22	23	24	25		

Firm/Agency, Address

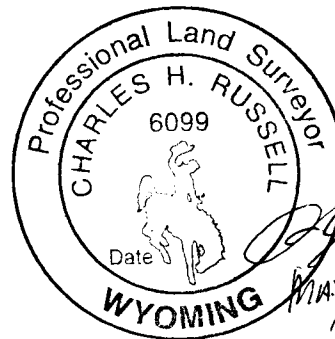
CHARLES H. RUSSELL P.L.S. 6099
AMERICAN WEST LAND SURVEYING CO.
29 SOUTH 4TH AVENUE
BRIGHTON, CO 80601

This corner record was prepared by me or under my direction and supervision.

SEAL & SIGNATURE

Telephone Number:

303-659-1532



RECORDED 6/22/2005 AT 12:37 PM REC# 420257 BK# 1888 PG# 1127
DEBRA K. LATHROP, CLERK OF LARAMIE COUNTY, WY PAGE 1 OF 1

Corner Name Northeast Corner of Section 36, T 13 N, R 69 W of the 6th P.M.

Cross-Index No.: V-25

County: Laramie Wyoming

SBRPEPLS/PLSW: March 1994; PLSW January 1998